

## PORTA-DOCK, INC.

### ALUMINUM PANEL DOCK ADD ON

A83 - R44 - R13 5' X 8' ADD ON SECTION

E50 - R45 5' X 10'5 ADD ON SECTION

E44 - R43 5' X 16' ADD ON SECTION

### CEDAR PANEL DOCK ADD ON

A91 - R54 - R14 5' X 8' ADD ON SECTION

E51 - R55 5' X 10'5 ADD ON SECTION

E45 - R53 5' X 16' ADD ON SECTION

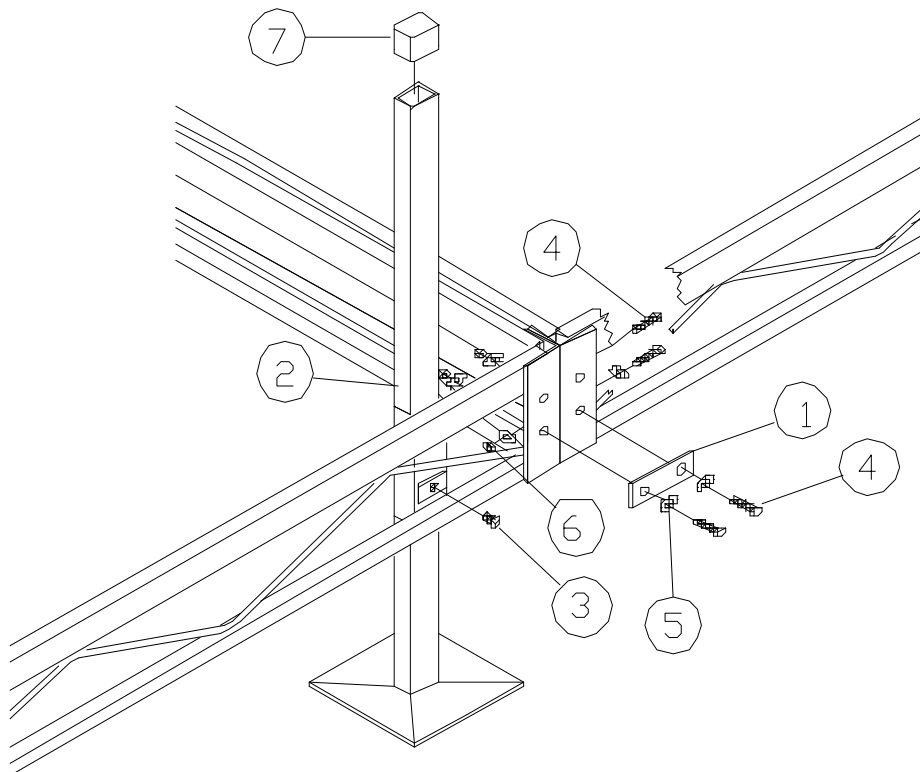
\*For Beige Decking add the letter B to Model\*

**Thank you for purchasing our product!**

**Please read these instructions and follow them step by step.\***

Turn add on section on its side and insert aluminum dock post (**REF. # 2**) into dock post pocket and tighten with 1/2" X 3/4" set screw (**REF. # 3**) (Finger tighten at this time). Place add on sections together and fasten thru the two end holes of the frame with 1/2" X 1 1/4" bolts, 7/16" washers and 1/2" nuts (**REF. # 4, 5 & 6**). Then locate your dock connector bracket (**REF. # 1**) and place on the two bottom holes on the outside of framework and fasten with (**REF. # 4, 5 & 6**). Adjust your dock to desired height then tighten set screws on dock post.

**NOTE:** On APD models run foam tape on top edge of framework. After the panels are installed on the dock, slide a cover plate (**Ref. #8**) down each dock post and onto the deck.. Place a rectangular post cap (**Ref. #7**) onto each post.



**PARTS LIST FOR APD/CPD 5' X 8', 10'5 & 16' ADD ONS**

| <b>REF.NO.</b> | <b>PART NO.</b> | <b>DESCRIPTION</b>                         | <b>2 PKT</b> | <b>4 PKT</b> |
|----------------|-----------------|--|--------------|--------------|
|                |                 |  | <b>QTY</b>   | <b>QTY</b>   |
| 1              | 10200           | DOCK CONNECTOR BRACKET                     | 2            | 2            |
| 2              | C27             | ALUMINUM DOCK POST                         | 2            | -            |
| 3              | 5170            | 1/2"X 1" SET SCREW                         | 2            | 4            |
| 4              | 5126            | 1/2"X 1 1/4" BOLT                          | 8            | 8            |
| 5              | 5069            | 7/16" WASHERS                              | 16           | 16           |
| 6              | 5058            | 1/2" NUT 8                                 | 8            | 8            |
| 7              | 3803            | RECTANGULAR POST CAP                       | 2            | -            |
|                | 4108            | 16' FOAM TAPE (APD 8' ONLY)                | 2            | 2            |
|                |                 | (APD 16' ONLY)                             | 4            | 4            |
| 8              | 3842            | COVER PLATE <b>APD</b> WHITE EACH POST PKT | 2            | 4            |
|                | 3845            | COVER PLATE <b>APD</b> BEIGE EACH POST PKT | 2            | 4            |
|                | 3841            | COVER PLATE <b>CPD</b> BROWN EACH POST PKT | 2            | 4            |

**FRAMES**

|     |                                      |
|-----|--------------------------------------|
| F99 | FRAME APD/CPD 5' X 8' ADD ON         |
| M05 | FRAME APD/CPD 5' X 8' 4/PKT ADD ON   |
| F82 | FRAME APD/CPD 5' X 8' PKTS LONGSIDE  |
| B72 | FRAME APD/CPD 5' X 10'5 ADD ON       |
| M06 | FRAME APD/CPD 5' X 10'5 4/PKT ADD ON |
| F98 | FRAME APD/CPD 5' X 16' ADD ON        |
| M04 | FRAME APD/CPD 5' X 16' 4/PKT ADD ON  |

**ALUMINUM PANELS**

| <b>DOCK3</b> | <b>DESCRIPTION</b>           | <b>BB7(B)</b> | <b>BB10(B)</b> | <b>BB11(B)</b> | <b>B13(B)</b> | <b>B16(B)</b> |
|--------------|------------------------------|---------------|----------------|----------------|---------------|---------------|
| A83          | AL PANEL 5' STRAIGHT         | -             | -              | -              | 1             | -             |
|              | AL PANEL 5' ADD ON CUTOUT    | -             | -              | -              | -             | 1             |
| R44          | AL PANEL 5' ADD ON CUTOUT    | -             | -              | -              | -             | 2             |
| R13          | AL PANEL 5' ADD ON LEFT CUT  | -             | -              | 1              | -             | -             |
|              | AL PANEL 5' ADD ON RIGHT CUT | -             | 1              | -              | -             | -             |
| E50          | AL PANEL 2'.5 STRAIGHT       | 1             | -              | -              | -             | -             |
|              | AL PANEL 5' STRAIGHT         | -             | -              | -              | 1             | -             |
|              | AL PANEL 5' ADD ON CUTOUT    | -             | -              | -              | -             | 1             |
| R45          | AL PANEL 2'.5 STRAIGHT       | 1             | -              | -              | -             | -             |
|              | AL PANEL 5' ADD ON CUTOUT    | -             | -              | -              | -             | 2             |
| E44          | AL PANEL 5' STRAIGHT         | -             | -              | -              | 3             | -             |
|              | AL PANEL 5' ADD ON CUTOUT    | -             | -              | -              | -             | 1             |
| R43          | AL PANEL 5' STRAIGHT         | -             | -              | -              | 2             | -             |
|              | AL PANEL 5' ADD ON CUTOUT    | -             | -              | -              | -             | 2             |

**CEDAR PANELS**

| <b>DOCK#</b> | <b>DESCRIPTION</b>           | <b>BB4</b> | <b>BB5</b> | <b>BB6</b> | <b>B10</b> | <b>B18</b> |
|--------------|------------------------------|------------|------------|------------|------------|------------|
| A91          | CEDAR PANEL 5' STRAIGHT      | -          | -          | -          | 1          | -          |
|              | CEDAR PANEL 5' ADD ON CUT    | -          | -          | -          | -          | 1          |
| R54          | CEDAR PANEL 5' ADD ON CUT    | -          | -          | -          | -          | 2          |
| R14          | CEDAR PANEL 5' ADD LEFT CUT  | -          | 1          | -          | -          | -          |
|              | CEDAR PANEL 5' ADD RIGHT CUT | -          | -          | 1          | -          | -          |
| E51          | CEDAR PANEL 5' STRAIGHT      | -          | -          | -          | 1          | -          |
|              | CEDAR PANEL 5' ADD ON CUT    | -          | -          | -          | -          | 1          |
|              | CEDAR PANEL 2'.5 STRAIGHT    | 1          | -          | -          | -          | -          |
| R55          | CEDAR PANEL 5' ADD ON CUT    | -          | -          | -          | -          | 2          |
|              | CEDAR PANEL 2'.5 STRAIGHT    | 1          | -          | -          | -          | -          |
| E44          | CEDAR PANEL 5' STRAIGHT      | -          | -          | -          | 3          | -          |
|              | CEDAR PANEL 5' ADD ON CUT    | -          | -          | -          | -          | 1          |
| E45          | CEDAR PANEL 5' ADD ON CUT    | -          | -          | -          | 2          | 2          |