

PORTA-DOCK, INC.

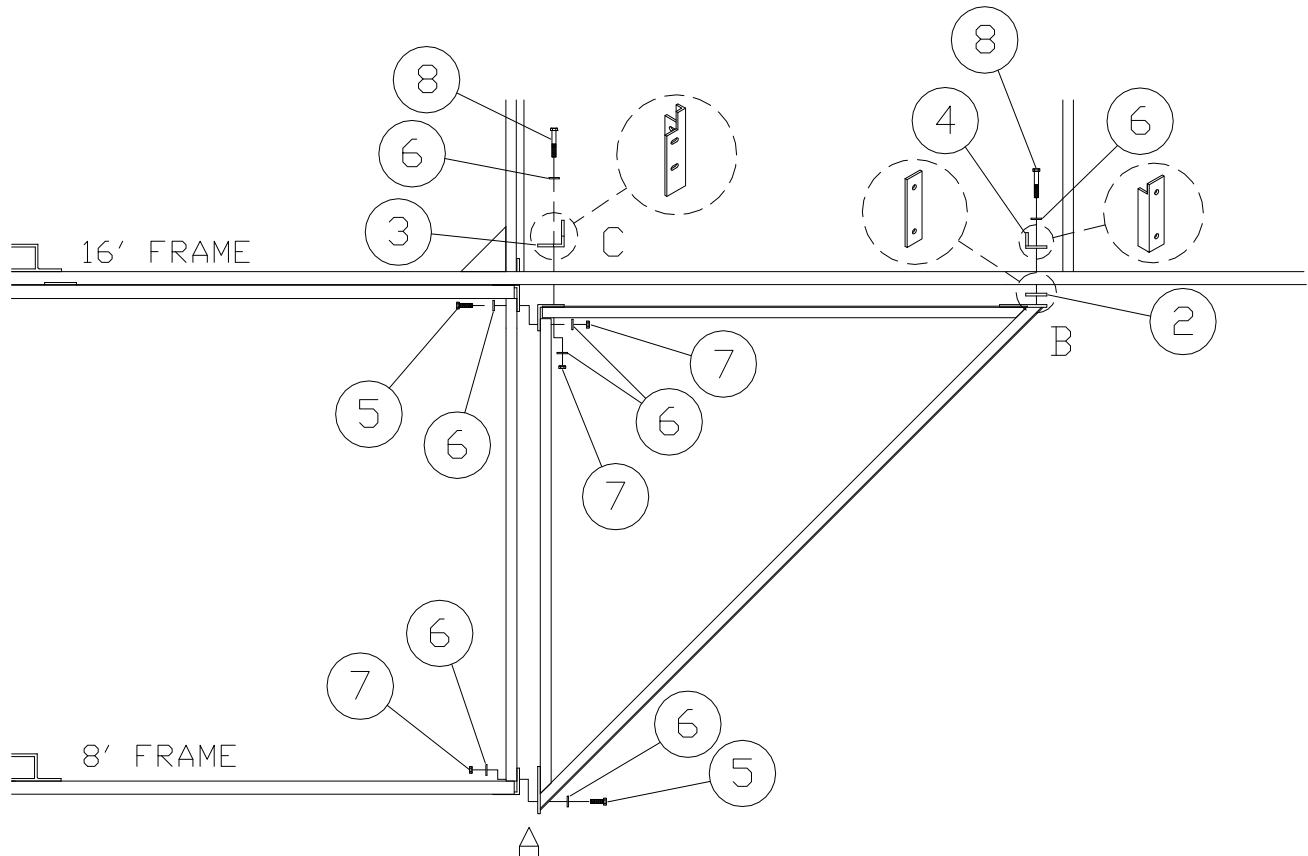
WHEEL DOCK CORNERS

AP70(B) APD DS 4' RIGHT CORNER * * AP75(B) APD DS 4' LEFT CORNER
CC8(B) APD DS 5' RIGHT CORNER * * CC9(B) APD DS 5' LEFT CORNER

Thank you for purchasing our product!
Please read these instructions and follow them step by step.*

NOTE: RUN FOAM TAPE ON TOP SIDE OF THE CORNER FRAME.

STEP 1. While holding the corner frame in position, at corner A bolt the corner frame to the 8' dock frame with 1/2" X 1 1/4" bolts, washers, and nuts (**Ref. # 5, 6, & 7**). At corner B slide the spacer plate (**Ref. # 2**) between the corner frame and the side of the dock, secure the corner to the dock as shown with the backer angle, 1/2" X 2 1/4" bolts, and washers (**Ref. # 4, 8, & 6**). At corner C bolt the angle on the corner to the angle on the 8' dock with 1/2" X 1 1/4" bolts, washers, and nuts (**Ref. # 5, 6, & 7**). Bolt the backer (**Ref. # 3**) to the other side of the angle on the corner with 1/2" X 2 1/4" bolts, washers, and nuts (**Ref. # 8, 6, & 7**).



STEP 3. Place the corner panel into the framework so that the planking is running in the same direction as the panels of the dock.

AP70(B) APD DS 4' RIGHT CORNER * * AP75(B) APD DS 4' LEFT CORNER
CC8(B) APD DS 5' RIGHT CORNER * * CC9(B) APD DS 5' LEFT CORNER

REF. #	PART#	DESCRIPTION	4' APD	5' APD
2	50513	CORNER SPACER PLATE	1	1
3	50515	INSIDE CORNER BACKER ANGLE	1	1
4	50514	CORNER BACKER ANGLE	1	1
5	5126	1/2" X 1 1/4" BOLT	4	4
6	5069	7/16" WASHER	14	14
7	5058	1/2" NUT	6	6
8	5120	1/2" X 2 1/2" BOLT	4	4

FRAMES

M38	4' LEFT CORNER FRAME	1	-
M39	4' RIGHT CORNER FRAME	1	-
M56	5' LEFT CORNER FRAME	-	1
M57	5' RIGHT CORNER FRAME	-	1

PANELS

B84(B)	4' LEFT APD CORNER PANEL	1	-
B43(B)	4' RIGHT APD CORNER PANEL	1	-
CC3(B)	5' LEFT APD CORNER PANEL	-	1
CC2(B)	5' RIGHT APD CORNER PANEL	-	1