

PORTA-DOCK, INC. BOAT BUNK KITS

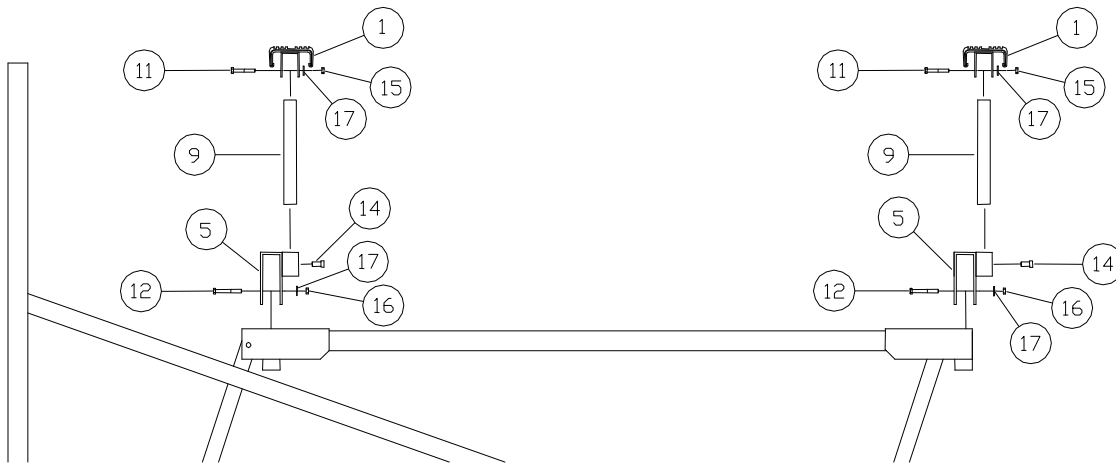
K90 EVB 2-3000 **K91** DVB 95" CANTILEVER **K92** DVB 113" CANTILEVER
K93(L)* FLB STANDARD 136.5" **K94(L)*** FLB LONG 156" **K100(L)*** FLB LONG 168"

*L MODELS HAVE 24" BUNK UPRIGHTS

Thank you for purchasing our product!
****Please read these instructions and follow them step by step.**

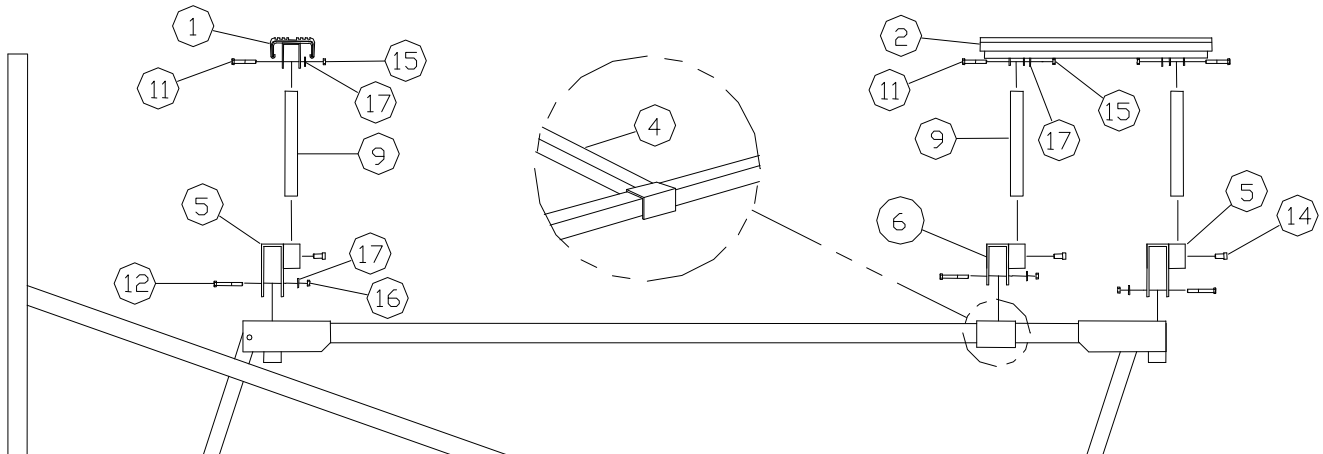
K90 EVB ECONOMY BUNK SYSTEM 2000-3000lb. CANTILEVER AND VERTICAL MODELS

Place two bunk brackets (**REF. NO. 5**) over the rear bed cross tube and two over the front bed cross tube. Place 3/8" x 3" bolts, washers, and nuts (**REF.NO. 12, 17, & 16**) into the bottom holes of the bunk brackets. Leave loose for now. Install the bunk upright tubes (**REF.NO. 9**) into the channels of 12" bunk (**REF.NO. 1**) and fasten with 3/8"x2 1/2" bolts, washers and nylock nuts (**REF.NO. 12, 17, & 15**). Place bunk assembly upright tube into the pockets of the bunk brackets and secure in place with 1/2" x 1" set screws (**REF.NO. 14**). Set to desired width and tighten bottom 3/8" bolts of bunk bracket.



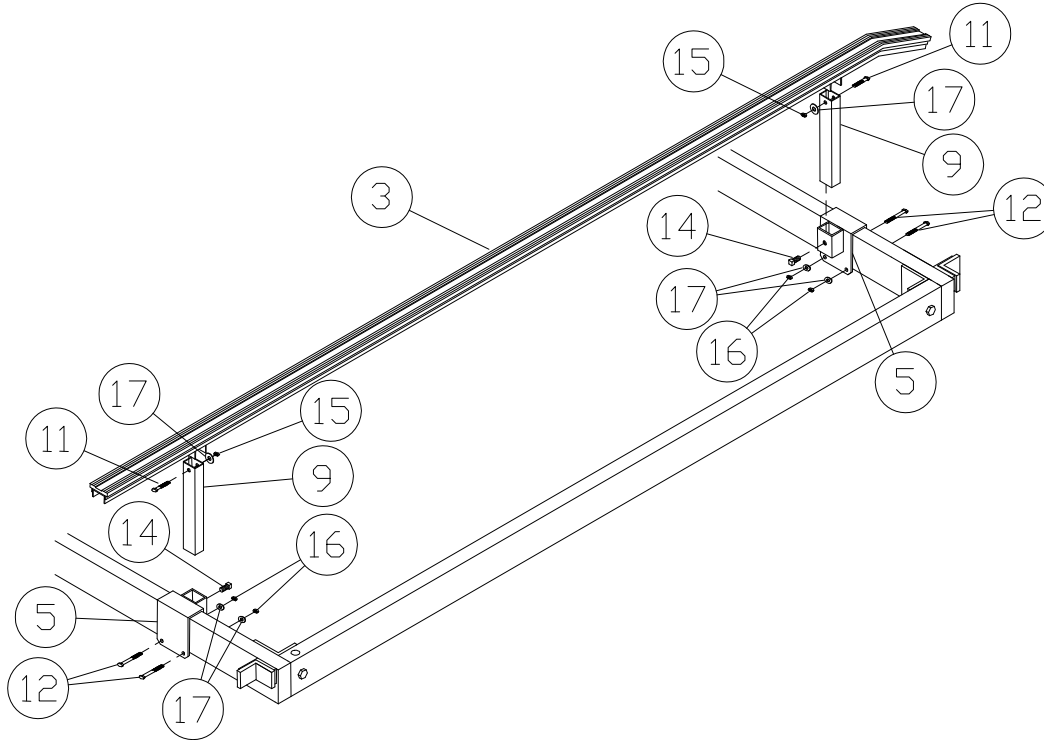
K91/K92 DVB BUNK SYSTEM 2000lb.-4000lb. CANTILEVER MODELS

Place the bunk bar tube (**REF.NO. 4**) (2" X 2" tube with channels welded on each end) over the two side rails about 12" in front of the rear bed cross tube. Set two large bunk brackets (**REF. NO 5**) over the rear bed cross tube, two over the front bed cross tube and the two smaller bunk brackets (**REF. NO. 6**) over the bunk bar tube. Make sure you have the bunk brackets facing the rear of the lift. Place 3/8" X 3" bolt, washers, and nuts (**REF.NO 12, 17, and 16**) into the bottom holes of the brackets. Leave loose for now. Install the bunk upright tubes (**REF. NO. 9**) into the channels of the 24" rear bunks (**REF.NO 2**). Fasten with 3/8" X 2 1/2" bolts, washers, and lock nuts. (**REF. NO. 11, 17 & 15**). Place the bunk assembly into the pockets of the bunk brackets on the rear cross tube and bunk bar. Secure in place with 1/2" X 1" set screws (**REF.NO 14**). Set to desired width and tighten bottom 3/8" bolts of bunk brackets. Locate the front 12" bunks (**REF.NO.1**) install the bunk upright tubes into the front bunks and fasten as done on the rear bunks. Place the front bunk assembly into the front bunk brackets and secure with 1/2" x 1" set screws. Set to desired width and tighten bottom 3/8" bolts.



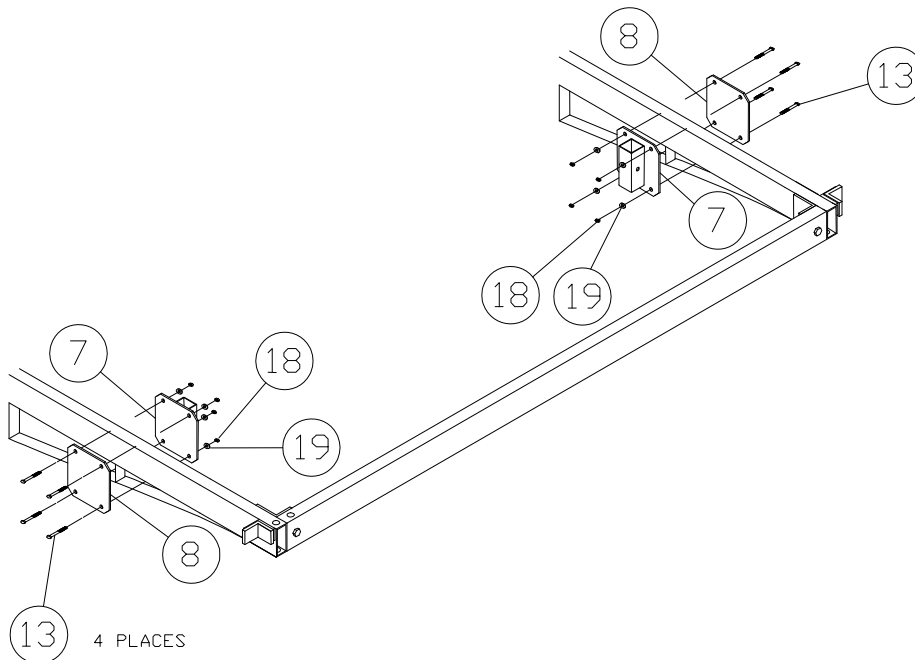
K93/K94 2000-4600lb. CANTILEVER AND VERTICAL FULL LENGTH BOAT BUNKS

Raise bed of lift to working height. Place four bunk brackets (**Ref. no. 5**) over the beds cross tube with the pocket of the bunk brackets toward the center of the lift. Place 3/8" X 3" bolts and washers through the bunk brackets so that the nut will be to the inside. Set to desired width and tighten nuts. Place bunk upright tubes (**Ref.no. 9**) into the pockets of the bunk brackets and hold in place with 1/2" X 1" set screws (**Ref.no.14**). Place the channels of the FLB bunk (**Ref. no. 3**) over the bunk upright tubes and fasten with 3/8" X 2 1/2" bolts, washers, and lock nuts (**Ref.no. 11, 17, & 15**). Raise and lower the lift a few times to make sure the cables and pulleys are working right. You may need a small amount of weight on the bed of the lift to lower it down.

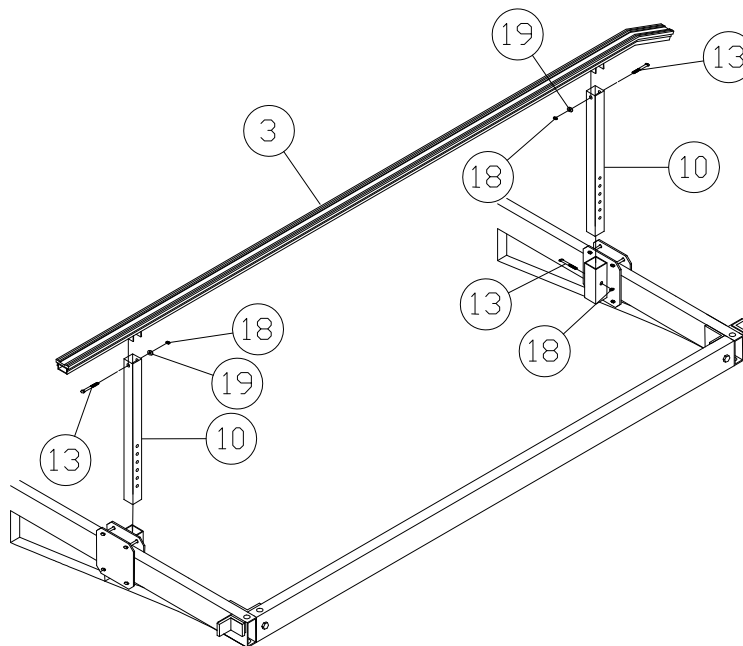


K100 6000lb. VERTICAL FULL LENGTH BOAT BUNKS

STEP 1. Raise bed to working height. Find the four FLB bunk brackets and backer plates (**Ref. # 12 & 26**) and bolt to the bed of the lift as shown with the pockets facing the center of the lift using 1/2" X 3 1/2" bolts, washers, and nuts (**Ref. # 20, 24, & 23**). Set to desired width and tighten nuts.



STEP 2. Place the bunk upright tubes (**Ref. # 10**) into the bunk bracket pockets set to desired height, and bolt in place with 1/2" X 3 1/2" bolts and nuts (**Ref. # 13 & 18**). Place the bunks (**Ref. # 3**) onto the uprights, with the tapered end toward the end of the lift where the back of the boat will be. Secure with 1/2" X 3 1/2" bolts, washers, and nuts (**Ref. # 13, 19, & 18**). Tip bunks inward slightly and tighten bolts so that the bunks will not turn freely but can pivot when weight is applied.



PARTS LIST

BOAT BUNKS

<u>REF. #</u>	<u>PART NO.</u>		K90	K91- K92	K93- K94	K100
			<u>2-3000</u> <u>EVB</u>	<u>2-4600</u> <u>DVB</u>	<u>2-4600</u> <u>FLB</u>	<u>6000</u> <u>FLB</u>
1	32B	BUNK ASSEMBLY 12"	4	2	-	-
2	31B	BUNK ASSEMBLY 24"	-	2	-	-
3	65C	FLB BUNK AND PAD 136.5	-	-	2	-
	87C	FLB BUNK AND PAD 156	-	-	2	-
	98C	FLB BUNK AND PAD 168	-	-	-	2
4	15F	BUNK BAR 2095/3095	-	1	-	-
	15G	BUNK BAR 20113/40113	-	1	-	-
5	36B	BUNK BRKT LARGE	4	4	4	-
6	35B	BUNK BRKT SMALL	-	2	-	-
7	18Q	BUNK BRKT 50120V	-	-	-	1
8	30810	BUNK BRKT BACKER 50120V	-	-	-	1
9	50020	BUNK UPRIGHT TUBE	4	6	4	-
*	50323	BUNK UPRIGHT TUBE 18"	-	-	4	-
10	50325	BUNK UPRIGHT TUBE 50120V	-	-	-	4
*	50327	BUNK UPRIGHT TUBE 50120V 24"	-	-	-	4
11	5083	BOLT 3/8 X 2 1/2	4	6	4	-
12	5084	BOLT 3/8 X 3	8	12	8	-
13	5121	BOLT 1/2 X 3 1/2	-	-	-	24
14	5174	1/2 X 1 SET SCREW	4	6	4	-
15	5038	3/8 NYLOCK NUT	4	6	4	-
16	5056	3/8 NUT	8	12	8	-
17	5070	3/8 WASHER	12	18	12	-
18	5058	1/2 NUT	-	-	-	24
19	5071	1/2 WASHER	-	-	-	20

* USED ON L MODELS ONLY

Porta-Dock, Inc.