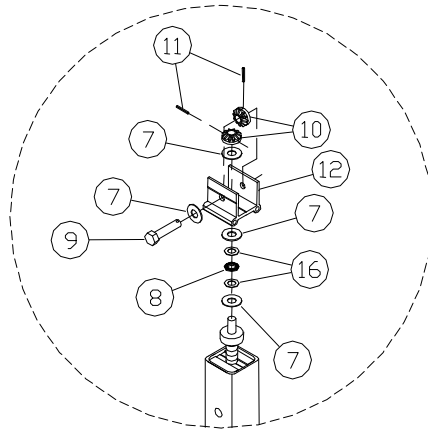
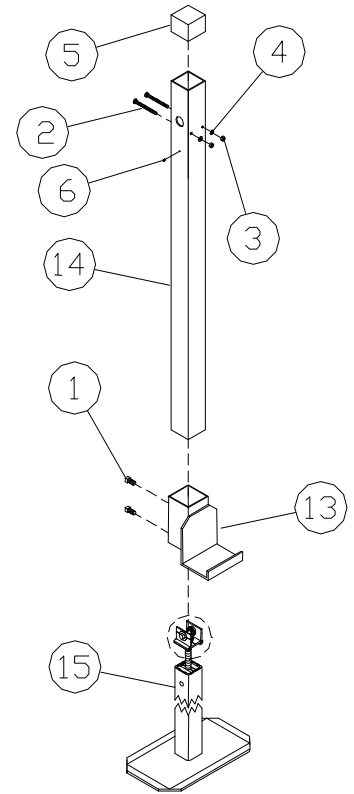


48Q LIFT JACK

Thank you for purchasing our product!

***Please read these instructions and follow them step by step.**

STEP 1. Slide the lift jack arm (REF. NO. 13) onto the lift jack tube (REF. NO. 14) and secure in place with 1/2" X 2" set screws (REF. NO. 1). Grease the top gears on the leg. Slide the leg assembly into the lift jack tube making sure that the bolt head on the leg jack driveshaft (REF. NO. 9) will line up with the big hole in the lift jack tube and the grease access hole in the leg will line up with the grease zerk hole in the lift upright. Bolt the leg in place with 5/16 carriage bolts, washers, and nuts (REF. NO. 2, 4, & 3). Pound the grease zerk (REF. NO. 6) into the small hole below the adjustment hole.



REF. #	PART #	DESCRIPTION	QTY
1	5174	1/2" X 1" SET SCREW	2
2	5209	5/16" X 3 1/2" CARRIAGE BOLT (3000)	2
3	5054	5/16 NUT	2
4	5068	5/16 WASHER	2
5	3823	3" SQUARE CAP	1
6	5011	3/16 GREASE ZERK	1
7	5203	1/2" STAINLESS STEEL WASHER	3
8	5250	THRUST BEARING	1
9	5192	1/2" SS LEG JACK DRIVE SHAFT	1
10	3196	BEVELED GEAR	2
11	5236	3/16 X 1 ROLL PIN	2
12	50420	2.47" GEAR YOKE (3000)	1
13	13R	LIFT JACK ARM	1
14	61076	LIFT JACK TUBE	1
15	75H	3000 LEVELING LEG SCREW ASSEMBLY	1
16	5252	WASHER THRUST BEARING	2

USE AND MAINTENANCE

Adjust the height of the jack by turning the bolt head on the leg jack drive shaft with a 3/4" socket and ratchet or a 3/4" socket in a cordless drill. Clockwise will lower the jack, and counter-clockwise will raise the jack. **Do not use an impact wrench, as the hammering effect will cause extra wear on the gears and drive shaft.** To grease the jack, adjust the leg so it is all the way into the jack tube. Grease with a non-petroleum based lubricant. Lower the leg 12 inches and grease again. Adjust the leg all the way down then all the way up; this will help distribute the lubricant onto the entire shaft.

Porta-Dock, Inc.