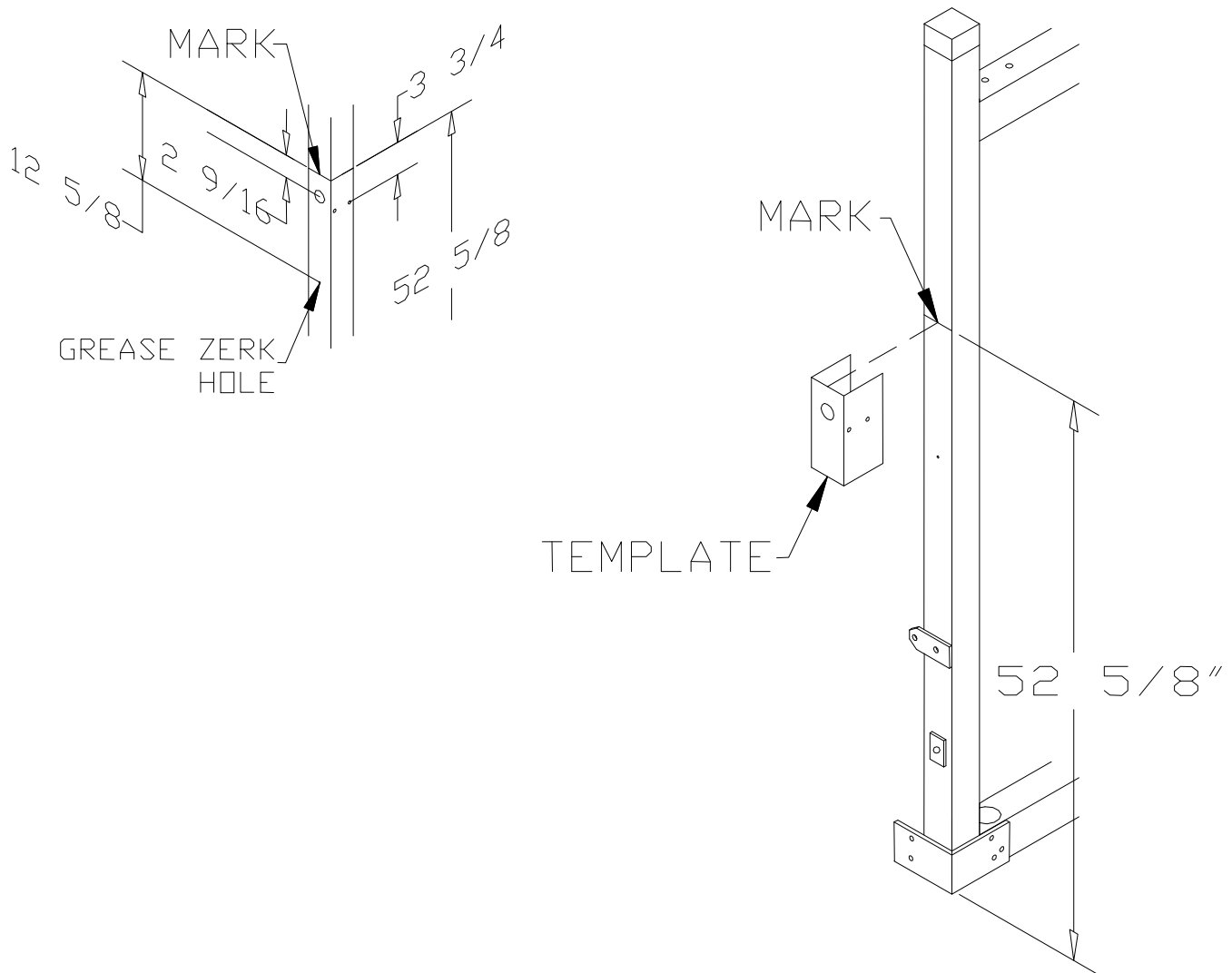


90Q 30113V-40120V & 92Q 46113V-46120V PAIR OF ADD ON LIFT SCREW SYSTEM LEGS

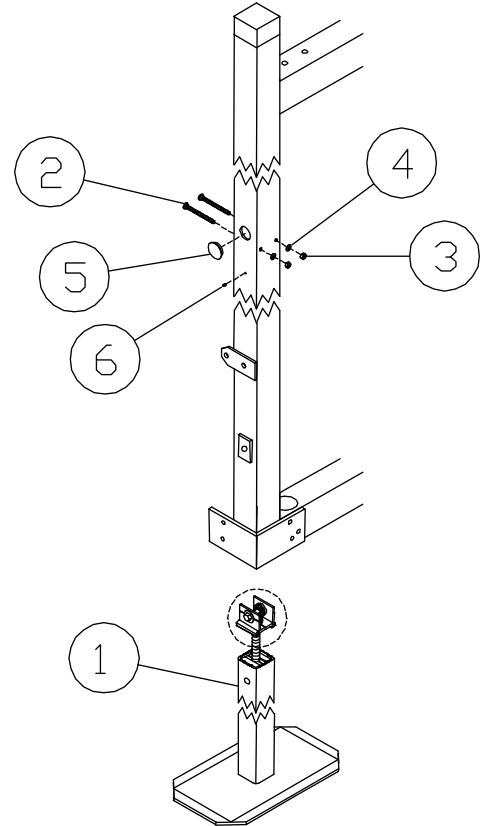
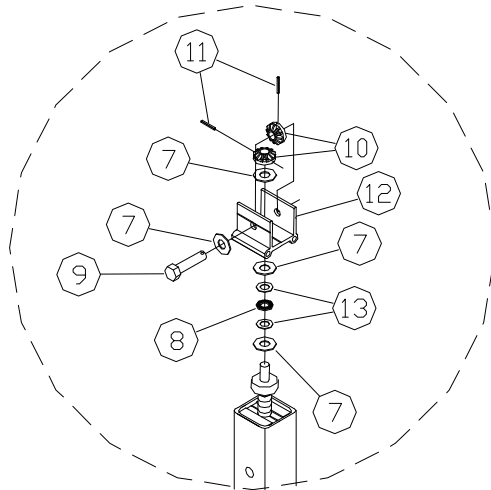
Thank you for purchasing our product!
***Please read these instructions and follow them step by step.**

STEP 1. Measure up $52 \frac{5}{8}$ " from the bottom of the lift on the front of each corner post and make a mark. Tape the supplied template to the tube so the top of the template is lined up with the mark. Center punch the center of each hole on the template. Measure down from the mark $12 \frac{5}{8}$ " and make a mark in the center of the tube for the grease zerk, center punch this mark and drill a $\frac{3}{16}$ " hole. Remove the template and pre-drill all holes with a $\frac{3}{16}$ " drill bit then drill the sized holes shown on the template.



STEP 2. Safely support the lift approximately 50" off the ground or disassemble the lift side members from the lift. Remove the leveling legs and set screws.

STEP 2. Grease the top gears on the leg. Slide the leg assemblies into the uprights of the lift side making sure that the bolt head on the leg jack driveshaft (REF. NO. 9) will line up with the big hole in the lift upright and the grease access hole in the leg will line up with the grease zerk hole in the lift upright. Bolt the legs in place with 5/16 carriage bolts, washers, and nuts (REF. NO. 2, 4, & 3) making sure that the carriage bolt heads are toward the inside of the lift. Pound the grease zerk (REF. NO. 6) into the small hole below the adjustment hole. Insert a 1 3/8" cap (REF. NO. 5) into each large hole in the lift upright.

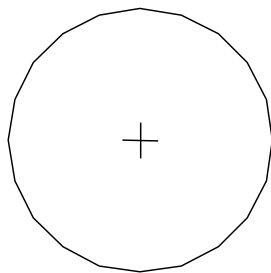


REF. #	PART #	DESCRIPTION	QTY
1	75H	LEG ASSEMBLY (3000)	4
	76H	LEG ASSEMBLY (4000)	4
2	5209	5/16" X 3 1/2" CARRIAGE BOLT (3000)	8
	5210	5/16" X 4" CARRIAGE BOLT (4000)	8
3	5054	5/16 NUT	8
4	5068	5/16 WASHER	8
5	3831	1 3/8 CAP GRAY	4
6	5011	3/16 GREASE ZERK	4
7	5203	1/2" STAINLESS STEEL WASHER	12
8	5250	THRUST BEARING	4
9	5192	1/2" SS LEG JACK DRIVE SHAFT	4
10	3196	BEVELED GEAR	8
11	5236	3/16 X 1 ROLL PIN	8
12	50420	2.47" GEAR YOKE (3000)	4
	50422	2.97" GEAR YOKE (4000)	4
13	5252	THRUST BEARING WASHER	8

USE AND MAINTENANCE

Adjust the height of the lift by turning the bolt head on the leg jack drive shaft with a 3/4" socket and ratchet or a 3/4" socket in a cordless drill. Clockwise will lower the lift, and counter-clockwise will raise the lift. **Do not use an impact wrench, as the hammering effect will cause extra wear on the gears and drive shaft.** Each fall when the lift is removed, adjust the leg so it is all the way into the lift. Grease with a non-petroleum based lubricant. Lower the leg 12 inches and grease again. Adjust the leg all the way down then all the way up; this will help distribute the lubricant onto the entire shaft. **WARNING – The watercraft must be removed from the lift before any height adjustments are made with the legs.**

TOP



$\varnothing 1 \frac{3}{8}$



$\varnothing 3/8$



FOLD

3000
VERTICAL

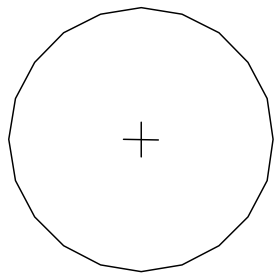


$\varnothing 3/8$



FOLD

TOP



$\varnothing 1 \frac{3}{8}$



$\varnothing 3/8$



F
O
L
L
O
W

4000
VERTICAL

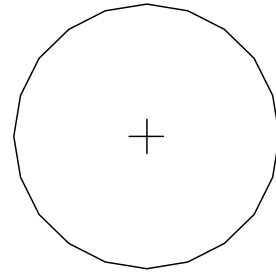


$\varnothing 3/8$



F
O
L
L
O
W

TOP



$\varnothing 1 \frac{3}{8}$



$\varnothing 3/8$



FOLD

4600
VERTICAL



$\varnothing 3/8$



FOLD

Porta-Dock, Inc.