

**PORTA-DOCK, INC.**

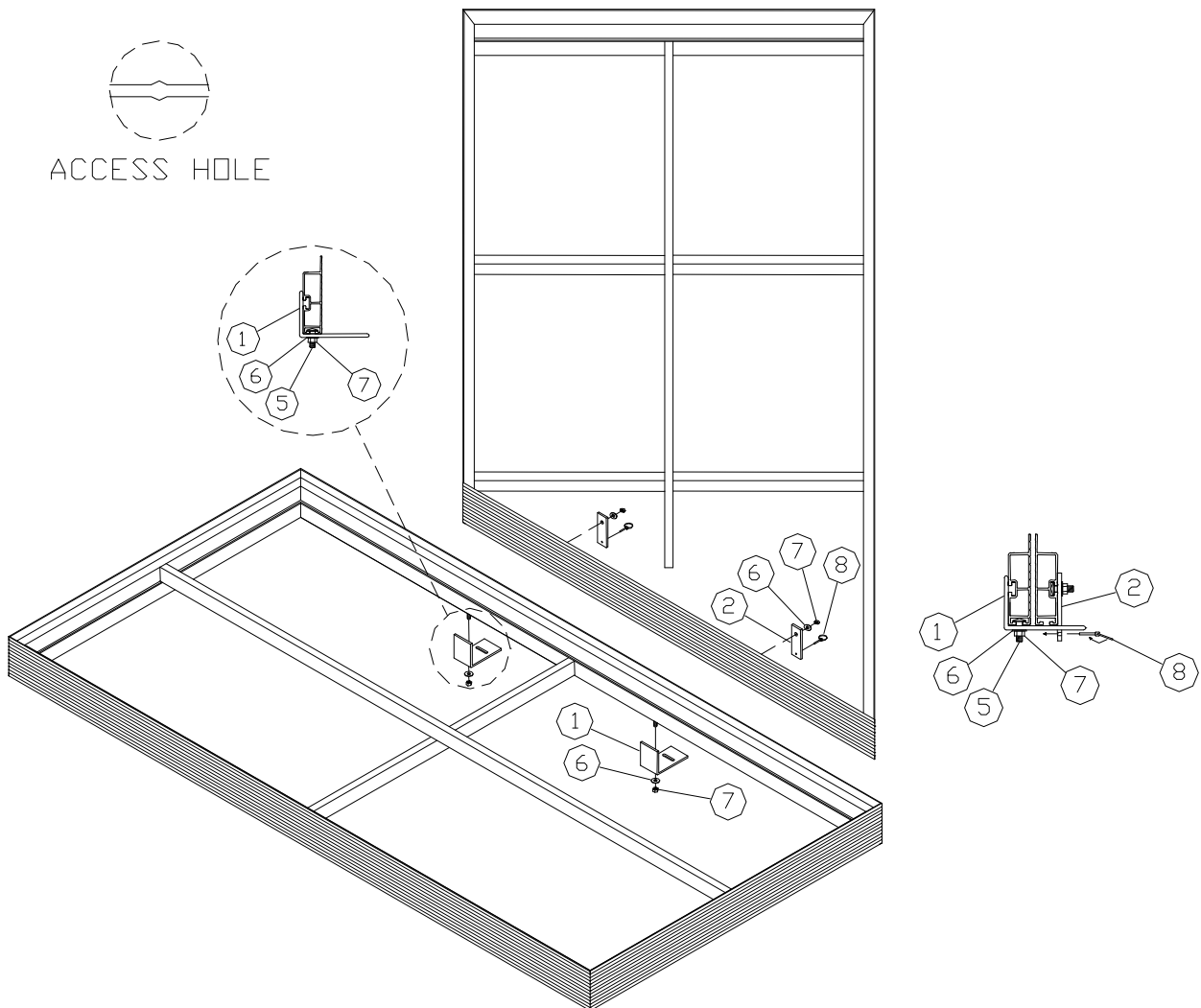
**APM32 MULTI-DOCK 4' X 12' ALUMINUM DECKING LEFT 45°**  
**APM30 MULTI-DOCK 4' X 12' ALUMINUM DECKING RIGHT 45°**  
**AWM32 MULTI-DOCK 4' X 12' CEDAR DECKING LEFT 45°**  
**AWM30 MULTI-DOCK 4' X 12' CEDAR DECKING RIGHT 45°**

**\*For Beige Decking Add the Letter B to the Model\***

**Thank you for purchasing our product!**

**\*Please read these instructions and follow them step by step.**

**Step 1.** Bolt the pockets and braces to the dock frames. See instructions in pocket box. Bolt the dock-connecting angles to the main walkway dock approximately 56" apart by sliding 3/8" X 1" carriage bolts (**REF. # 5**) into the bottom access holes in the frame where the connection will be and secure the angles with 3/8" washers and nuts (**REF. # 6 & 7**) making sure the connecting angle is held tight against the inside of the frame. Set the angled dock section on these angles then slide a 3/8" X 1" carriage bolt (**REF. # 5**) into each access hole in the frame, slide the dock connecting flat into the slot in the dock connecting angle and secure with a 3/8" washer and nut (**REF. # 6 & 7**). After the flat is in the slot place a pin (**REF. # 8**) through the hole. On APM models, run foam tape on the top edge of framework.



**APM32 MULTI-DOCK 4' X 12' ALUMINUM DECKING LEFT 45°**  
**APM30 MULTI-DOCK 4' X 12' ALUMINUM DECKING RIGHT 45°**  
**AWM32 MULTI-DOCK 4' X 12' CEDAR DECKING LEFT 45°**  
**AWM30 MULTI-DOCK 4' X 12' CEDAR DECKING RIGHT 45°**

<b>REF. #</b>	<b>PART #</b>	<b>DESCRIPTION</b>	<b>APM</b>	<b>AWM</b>
1	60153	DOCK CONNECTING ANGLE	2	2
2	60154	DOCK CONNECTING FLAT	2	2
3	4108	TAPE-PVC FOAM 16' ROLL	3	-
4	3829	CAP PLUG 1 3/8" WHITE	2	-
	3830	CAP PLUG 1 3/8" BEIGE	2	2
5	5193	CARRIAGE BOLT 3/8" X 1"	4	4
6	5070	3/8" WASHER	4	4
7	5056	3/8" NUT	4	4
8	5239	LYNCH PIN 3/16" X 1 9/16"	2	2

**DOCK FRAMES**

M85 4' X 12' MULTI-DOCK FRAME 45° END LEFT  
M86 4' X 12' MULTI-DOCK FRAME 45° END RIGHT

**PANELS**

**ALUMINUM PANELS**

B43(B) APD PANEL 4' RIGHT CORNER  
B84(B) APD PANEL 4' LEFT CORNER  
B86(B) APD PANEL 4' X 4' SR TAIGHT

**CEDAR PANELS**

B53 CPD PANEL 4' X 4' SR TAIGHT  
B82 CPD PANEL 4' LEFT CORNER  
B83 CPD PANEL 4' RIGHT CORNER